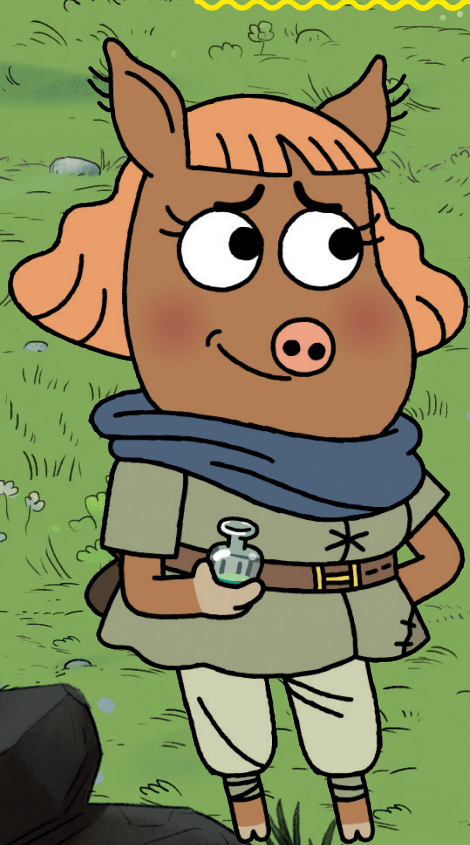




CARTOON NETWORK™
ADVENTURE ACADEMY

TEACHER GUIDE FOR KS1





USING THE RESOURCE AT KEY STAGE 1

WELCOME TO THE HEROIC QUEST OF THE VALIANT PRINCE IVANDOE!

Thank you for your interest in this resource.

The five lessons and presentations you're about to explore have been designed for adaptation to Key Stage 1 teaching. This guide offers suggestions about how to do this.

'SHARE IDEAS AND IMAGINATION'

The DFE Art and Design English Programme of Study [POS] suggests that pupils at KS1 should:

- 'Use drawing, painting and sculpture to develop and share their ideas, experiences and imagination.'

This exciting resource has been designed to respond to the POS and enable your pupils to enjoy using their imaginative skills to the full.

THE FOLLOWING ELEMENTS OF THE KS1 NATIONAL CURRICULUM ARE ALSO RELEVANT TO THE RESOURCE.

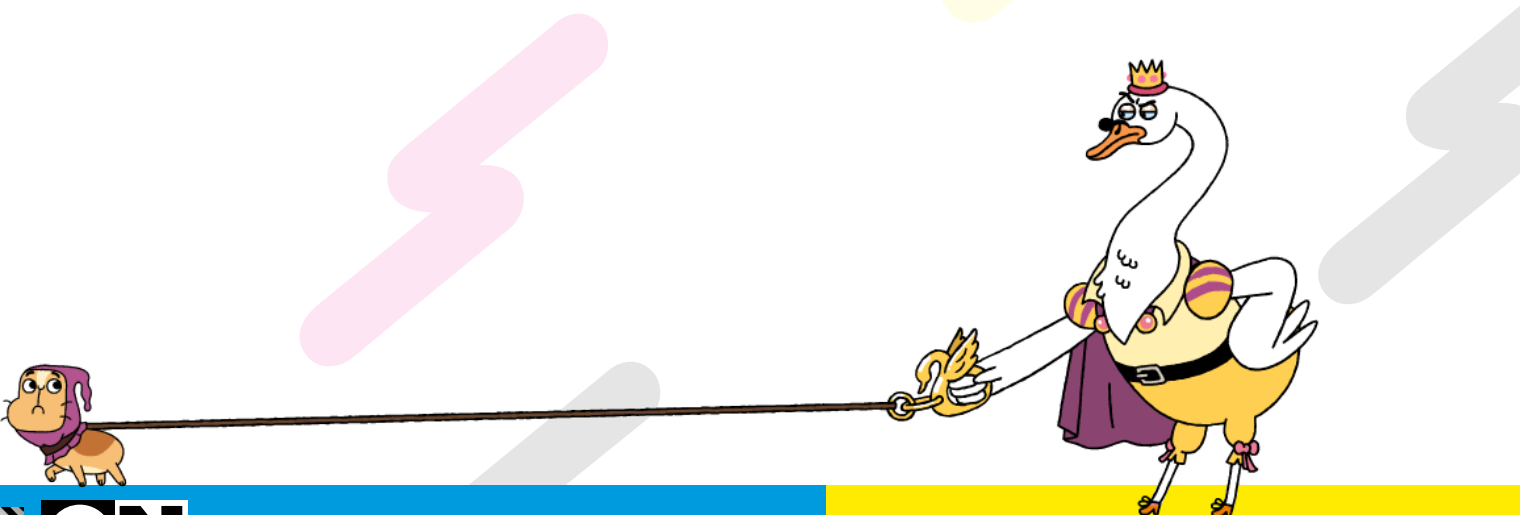
Art and Design

The National Curriculum for Art and Design aims to ensure that all pupils:

- Produce creative work, exploring their ideas and recording their experiences.

English (Spoken Language)

- Use spoken language to develop understanding through speculating, hypothesising, imagining and exploring ideas.
- Speak audibly and fluently with an increasing command of Standard English.
- Participate in discussions, presentations, performances, role play/improvisations and debates.





USING THE RESOURCE AT KEY STAGE 1

DIFFERENTIATING THE RESOURCE

Lessons 1 to 5

All the lessons in the resource allow for an increased level of scaffolding e.g. by extending the introductory 'Talk, Pair, Share' segment to help build pupil confidence before launching the main lesson focus.

For some lessons, the Teacher Guide offers suggestions for extending this part of the lesson.

Lesson 1:

During the main part of the lesson you may also wish to:

- Extend the discussion elements of the lesson.

The 'what3words' activity can also be extended to include wider points of interest e.g. they could plot the three words which apply to their extended family, especially if relations live beyond the local area.

Lesson 2:

In this lesson, pupils might:

- Enjoy describing in detail the first 'proper' holiday they enjoyed after restrictions began to lift.

A 'travel broadens the mind' class discussion might allow your pupils to offer interesting reflections on the satisfaction that less glamorous but equally enjoyable holidays can offer e.g. a day at a local resort, memories of a school camp or a day trip to a historic local city.

Lesson 3:

In addition to the quiz that opens the lesson, you may like to add questions based on your knowledge of journeys pupils in your class have undertaken. Also:

- You may wish to focus more extensively on the local area.
- If practical, you might take the class on a visit to a place of interest which is local enough to avoid the need for extensive planning.
- For the main lesson activity, pupils might wish to talk at greater length about interesting or exciting locations they've visited.

- Pupils might enjoy recalling aspects of Jules Verne's 'Around The World in 80 Days'.
- You might prefer to widen the discussion to include places other than cities or towns.
- For the last part of the lesson, pupils could have an extended quiz before taking on the mapping process.

Lesson 4:

An interesting way of launching this as a KS1 lesson would be to develop the R.L. Stevenson's 'Treasure Island' connection.

- Pupils who know the story could be willing to share their knowledge of the plot.
- The map which lies at the heart of the story, could become a more significant part of the lesson.
- If possible, the sketch of the island could be projected onto the whiteboard or wall and all the elements featured in the sketch can inform the work they will do in creating their imaginary island.

Lesson 5:

The Heroic Quest Of The Valiant Prince Ivandoe Competition offers pupils an exciting conclusion to their work on this resource. The prize is a real opportunity for the winner to have their work acknowledged in an exciting and original manner.

You may wish to extend the opening quiz activity at the start of the lesson.

The downloadable competition leaflet provides full details of the competition criteria and final entry date.

We hope you and your class enjoy this activity.

If it leaves your pupils wanting more, why not launch a 'The Heroic Quest Of The Valiant Prince Ivandoe' After School or Lunch Time Club?

THANK-YOU FOR USING THIS RESOURCE.